



# TheWheatField

THE NEWSLETTER OF THE SASKATCHEWAN WHEAT DEVELOPMENT COMMISSION

FEBRUARY 2018 EDITION

## New Board of Directors for Sask Wheat

The Saskatchewan Wheat Development Commission (Sask Wheat) has formally installed its new Board of Directors. The results of the 2017 Sask Wheat elections were announced and the new Board of Directors was introduced at the Sask Wheat Annual General Meeting (AGM) on Tuesday, January 9, 2018.

The Board welcomed two new directors: Brett Halstead and Jake Leguee. Brett joins the board after serving as a director of SaskCanola for eight years. He and his family operate a mixed farm near Nokomis, growing wheat, barley, oats, canola, flax, peas, and soybeans and raising beef cattle.

Jake is a third-generation farmer who farms with his wife and sister near Weyburn, growing a variety of crops including durum, canola, spring and winter wheat, peas, lentils, and soybeans. Jake has a degree in Agriculture from the University of Saskatchewan, specializing in agronomy.

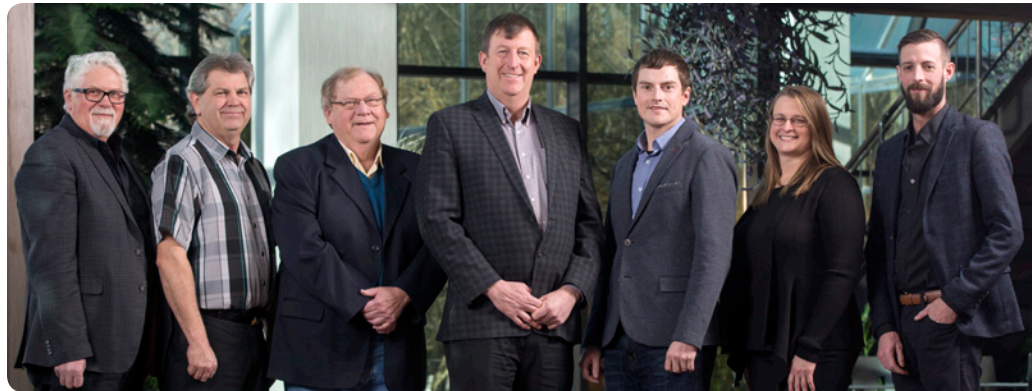
Returning board members include:

Dan Danielson, a wheat, canola, lentil and canary seed farmer in the Tyner/Eston area. Dan was first elected to the Board in 2013, was re-elected in 2015, and has served as vice-chair of the Board and as Chair of the Audit Committee.

Bill Gehl, who farms north of Regina on a third-generation, multi-family farm, growing wheat, barley, flax, canola and pulses. Bill was re-elected for a 4-year term in 2017. He served as the Board Chair of Sask Wheat from January 2014 until January 2018.

Scott Hepworth, a fourth-generation producer on his family's farm near Assiniboia. Scott grows durum and wheat, as well as lentils and canola. Scott was first elected to the Sask Wheat Board of Directors in 2015.

Laura Reiter, who farms with her husband and brother at Radisson. Laura is a producer and a trained agrologist who has spent time working in research and in the agriculture retail sector. Laura was



**Sask Wheat Board of Directors, January 2018** – L to R: Ken Rosaasen, Bill Gehl, Dan Danielson, Brett Halstead, Jake Leguee, Laura Reiter, Scott Hepworth

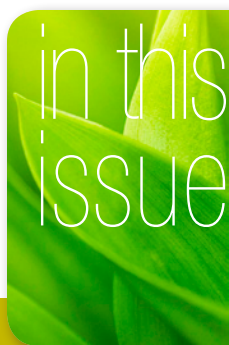
first elected to the Board in 2013 and was re-elected in 2015. She has also served as the Research Committee Chair for Sask Wheat for the past two years.

Ken Rosaasen, a former professor of Agricultural Economics at the University of Saskatchewan, who has served as a Sask Wheat director since 2014 and was re-elected to a 4-year term in 2017. Ken farms with his family near Preeceville, growing conventional crops on 2000 acres.

At the AGM, the Board also paid tribute to former directors Glenn Tait and Rod Flaman. Glenn and Rod were both elected in 2013, taking office in 2014. Both served on Board committees as Sask Wheat representatives with other organizations.

Bill Gehl thanked Glenn and Rod for the years of service they devoted to the organization and noted, "They were instrumental in building the foundation and strategic direction of Sask Wheat and both worked hard on behalf of Saskatchewan's grain farmers. We appreciate everything they did for Sask Wheat and wish them the best."

The first meeting of the new Board took place January 11, 2018 in Saskatoon, where the board chair and vice-chair were selected. Laura Reiter was elected by the Board to serve as the board chair and Scott Hepworth was selected to serve as vice-chair of the Board of Directors. Reiter is looking forward to this new challenge. "I would like to thank my fellow directors for electing me to this position," said Reiter. "Sask Wheat has grown significantly over the past four years and has made good investments in research on behalf of farmers that will benefit their operations and open up market opportunities. We have also made a significant impact as advocates of farmers, notably with transportation issues. I look forward to building on these activities and ensuring that the priorities of Saskatchewan wheat producers are not only heard, but acted upon."



Chair's Report.....	2
General Manager's Report.....	3
Semi-Annual Meeting.....	3
Market Outlook, January 2018.....	4
ADF Research Commitment.....	5
SR&ED Tax Credits.....	6
Midge Tolerant Wheat Stewardship Assurance Site.....	6
Scholarships.....	6
Grade School.....	7
Cigi New Crop Mission Update.....	7
Think Wheat.....	8

# CHAIR'S REPORT: Spring 2018



2018 is shaping up to be another busy year for the Saskatchewan Wheat Development Commission. We started off 2018 with our Annual General Meeting (AGM) during CropSphere, where we formally installed our new Board of Directors. Following the AGM, the first meeting of the new Board took place and the Board Chair and Vice-Chair were selected. I am honored to have been elected Chair, and want to congratulate Scott Hepworth on being elected Vice-Chair. I look forward to working with and for the board in the upcoming year. I would also like to thank Bill Gehl, Past Chair, and Dan Danielson, Past Vice-Chair, for all the time and hard work they have put into the organization. As well, I want to welcome Brett Halstead and Jake Leguee to the Board of Directors.

With new directors added to the Board, we will take the opportunity to review, renew, and refresh Sask Wheat's strategic plan over the next few months and determine implications for the 2018-19 business plan and budget. The Board has worked hard over the last several years to establish a strategic plan that resonates with producers and to develop a business planning process that concentrates on the key economic issues of wheat producers. In addition, the Board has made sure there are resources, protocols and policies in place to ensure smooth and efficient operations for Sask Wheat.

Research remains Sask Wheat's top priority for investment of producer check-off funds. The Board of Directors of Sask Wheat is focused on investing farmers' money strategically on breeding and research activities that have the greatest opportunities to improve the bottom lines of Saskatchewan wheat farmers. In 2016-17, Sask Wheat committed \$2.2 million to 20 projects in the areas of variety development, production and post-production. Sask Wheat has been laddering up its research investments since the first elected Board took office in 2014. As of January 2018, Sask Wheat has committed nearly \$10.7 million to 69 projects since 2014. This has helped leverage \$66.8 million in funding from all sources for these projects.

Market development remains an important area for Sask Wheat, and we are continuing to work with the Canadian International Grains Institute (Cigi), on a renewed governance model and updated strategic plan. This is an important initiative for Sask Wheat, as producers' dollars fund the market development and facilitation undertaken by Cigi. We will also continue to partner with other industry players to ensure continued market access for wheat in foreign markets. This includes working with the Canada Grains Council and the Grains Roundtable process of Agriculture Canada. As well, Sask Wheat reviews its memberships on a regular basis, and we will be undertaking a review of our industry partnerships and collaborations over the next several meetings.

Advocacy is an important pillar for Sask Wheat, and we will continue to advocate on behalf of producers on policy issues that will impact their profitability and sustainability. Transportation and the passing of Bill C-49 remains an important issue for 2018, and we will continue to work with our Producer Coalition partners, APAS and Sask Barley, on this topic.

Communication is another important initiative for Sask Wheat, as we aim to provide producers with timely, meaningful information that will support wheat production on their farms. One way we have done this is through our FHB risk maps which we will continue in 2018. We will also continue to provide extension events throughout the province for producers such as Think Wheat, Grade School, and our Semi-Annual Meeting held in conjunction with the Farm Progress Show in Regina.

Sask Wheat's strategic planning and business planning processes have ensured the organization's growth and success over the past four years, and I look forward to working with the Board to plan for 2018-19 and beyond.

*Laura Reiter, Chair*



## BOARD MEMBERS:

Laura Reiter, Chair  
Radisson

Scott Hepworth, Vice-Chair  
Assiniboia

Dan Danielson  
Saskatoon

Bill Gehl  
Regina

Brett Halstead  
Nokomis

Jake Leguee  
Weyburn

Ken Rosaasen  
Preeceville

## STAFF:

Harvey Brooks  
General Manager

Dallas Carpenter  
Communications Manager

Blair Goldade  
Research Program Manager

Valar Gurusamy  
Research Program Assistant

Deb Rousson  
Office Administrator

Kelsey Tollefson  
Policy Manager

*The Wheat Field* is a publication of the Saskatchewan Wheat Development Commission (Sask Wheat). Articles are not to be reproduced without written permission from Sask Wheat. Articles represent the opinions of the authors and do not necessarily reflect the opinion of Sask Wheat.

## CONTACT US:

**Saskatchewan Wheat Development Commission**

310 - 111 Research Drive  
Saskatoon SK S7N 3R2

Phone: 306-653-7932

Fax: 306-653-7935

saskwheatcommission.com

info@saskwheatcommission.com

Want to receive this newsletter by email? Send your request to:  
info@saskwheatcommission.com



## GENERAL MANAGER'S REPORT:

# Spring 2018



As a new planting season approaches farmers will be focused on the cropping options available within their crop rotation and many unique issues will weigh on those decisions. Top of mind for 2018 will be moisture conditions going into spring planting—certainly most areas have nearly exhausted the soil moisture reserves that saved last year's crop and most areas have not had sufficient water recharge as yet. Also, relative prices for commodities are a factor given recent international trade issues and ongoing supply/demand

conditions, i.e., relative abundance weighs on crops differently this year. In addition, new varieties offer the prospect of higher yields and better disease resistance. In spite of these near-term pressures, and to help future decisions, it is important to keep an eye on long term competitiveness of the industry.

Producer efforts to promote research to help their operations are expected to receive a big boost in the next few months as the federal government's Canadian Agricultural Partnership (CAP) combines producer and public dollars in a major effort to advance solutions for issues critical to producers. Sask Wheat, Alberta Wheat Commission and Manitoba Wheat and Barley Growers Association have recently incorporated the Canadian Wheat Research Coalition (CWRC) to collaborate on large national and regional research efforts. The CWRC is the proponent on the submission of the Canadian National Wheat Cluster under the CAP—this is a 5-year agreement with many co-funders that will direct a large wheat research effort. Sask Wheat will be the initial host commission for the CWRC and we will be working hard over the next few months to implement this Wheat Cluster funding agreement. The previous Wheat Cluster (National Wheat Improvement Program) was \$25.2 million over 2013 to 2018 and we are hopeful for more emphasis on wheat under this new program.

The CAP will also provide the opportunity for producer commissions to work together on an Integrated Crop Agronomy Cluster which we are very hopeful will provide for enhanced research from an integrated crop and whole farm perspective to enhance competitiveness and

profitability. This Agronomy Cluster is being led by the Western Grains Research Foundation with other commissions participating as significant co-funders. This research initiative is the first of its kind.

These research efforts are taking place while we finalize contracts for research under the Sask Ministry of Agriculture's Agriculture Development Fund (ADF), which recently announced the successful proposals under the most recent intake. Sask Wheat will be participating with \$2.7 million toward 12 new projects that will leverage a total of \$11.1 million of research activity.

Next on our agenda for the spring is a review of participation in research projects generated through the Alberta Funding Consortium that have economic importance to Saskatchewan wheat producers. We participate in the research efforts in neighbouring provinces when it makes sense and Alberta Wheat Commission and Manitoba Wheat and Barley Growers Association do the same—we are stronger when we can coordinate and establish synergies in our efforts. That will be followed by initial discussion/negotiations between the CWRC and Agriculture and Agri-food Canada on a renewed Core Wheat Breeding Agreement. The last AAFC Core Breeding Agreement was \$20.2 million over 5 years, so this is of significant importance to our national research efforts.

The scope and potential benefits of these research efforts wouldn't be possible without producer levy dollars and producer governance. Producers have a strong history of supporting research efforts to solve their production issues. This continues in 2017/18 as Sask Wheat combined the Western Canadian Deduction (\$0.48/t) with the Sask Wheat levy (\$0.52/t). These two levies are now represented in a \$1.00/tonne Sask Wheat levy. So, no net increase in producer levies and we have committed to continuing the efforts supported previously by the WCD, which included funding to the Canadian International Grains Institute and funding of the National Wheat Cluster and Core Wheat Breeding Agreements. We have again coordinated this with the Alberta Wheat Commission and the Manitoba Wheat and Barley Growers Association to ensure a seamless transition for producers, researchers and the market development efforts of Cigi. We will work hard to make these happen on your behalf.

*Harvey Brooks, General Manager*

## Attend the Sask Wheat Semi-Annual Meeting at Farm Progress Show

All registered wheat growers are encouraged to attend the fourth Sask Wheat Semi-Annual Meeting, June 20, 2018, during the Farm Progress Show in Regina. This meeting is a chance for wheat producers to learn more about the work Sask Wheat is doing, and is also an opportunity to provide input to the Sask Wheat Directors and staff members. A guest speaker is also planned during the meeting.

**Registration is free and includes a complimentary breakfast.**

### MEETING DETAILS

Wednesday, June 20, 2018

8:00 a.m. to 8:30 a.m. – Breakfast

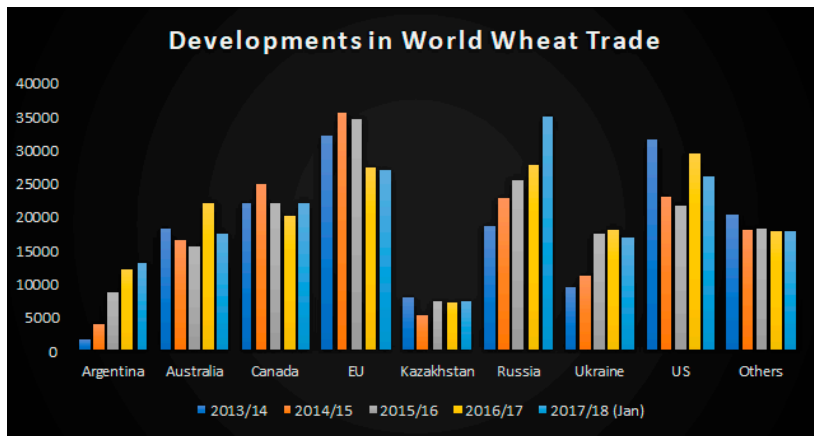
8:30 a.m. to 10:30 a.m. – Meeting and presentations  
Ballroom A, Queensbury Convention Centre  
Evraz Place, Regina (during Farm Progress Show 2018)

### REGISTRATION WILL BE AVAILABLE IN APRIL

- Visit: [www.saskwheatcommission.com](http://www.saskwheatcommission.com)
- Phone: 306-653-7932
- Email: [info@saskwheatcommission.com](mailto:info@saskwheatcommission.com)

# Wheat Market Outlook, January 2018

by Marlene Boersch, Mercantile Consulting Venture Inc.

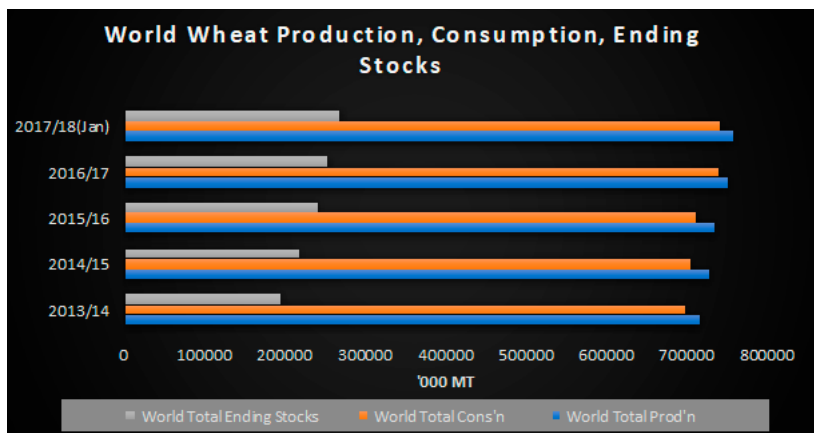


Source: Mercantile, based on USDA Members

This year had a lot of big changes in store for the wheat markets. Wheat production turned out to be very strong, with some wheat producing nations gaining more prominence than they previously had. This also implied big changes to the wheat trade matrix, with the biggest gains made by Russia, which emerged as the world's biggest wheat exporter for the first time this year. Argentina also gained market share, while North America and the EU lost ground. Overall wheat exports are projected to increase by ~650k mt from last crop year, but competition among exporters is increasing, most notably from Russia.

Writing in late January, the markets have just digested the latest bearish USDA report on US and world wheat. The US Grain Stocks report also indicated lighter-than-expected all-wheat disappearance through the first half of the 2017/18 marketing year. The fallout from both reports was biggest in Chicago (winter wheat), as USDA increased all wheat ending stocks for this crop year and added an additional 1.3 million acres to 2018 winter wheat in the US, though it is worth noting that the US seeded winter wheat acreage is still the second lowest on record in 100 years.

Globally, wheat production was again increased to a record 757 million mt, primarily because of another 2 million mt increase in the '17/18 Russian wheat production estimate to 85 million mt. As there were no real changes in the demand picture, global wheat



Source: Mercantile, based on USDA Members

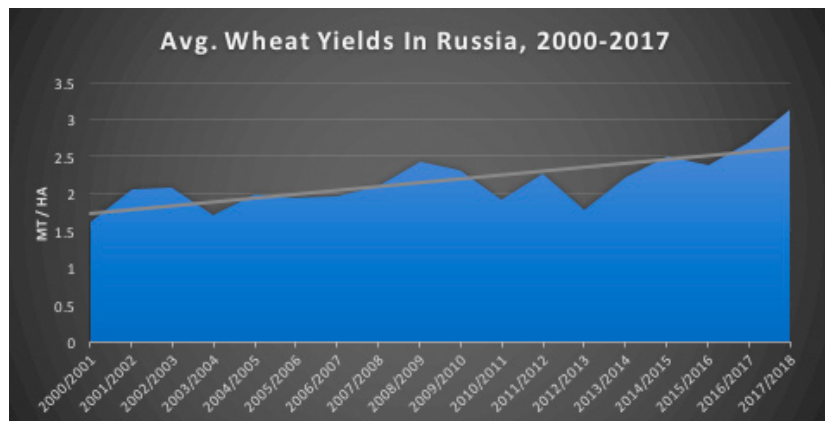
carry-out also increased to 268 million mt, also a new record (+15 mln mt or +6% over last crop year). Given these latest numbers, the big question for farmers is if there is any hope for the wheat market to turn constructive?

Looking forward, we think wheat may actually develop more strength than other markets, and we will be watching a couple of factors in the market.

First – production numbers: Wheat yields, especially in Russia, were outstanding last year, and it is highly unlikely that they will stay at record levels. Early concerns about winter kill in the US and in Europe and questionable establishment of wheat in some regions of Europe have already been noted and will need to be confirmed towards spring. If the problems prove to be real, then they will need to be integrated into production projections. To give an example, a 10-15% downturn in Russian yields alone would

lower the Russian wheat production number by 8-12 million mt, a big change to the balance sheet.

In fact, on January 18th, the International Grains Council (IGC) in its first forecast for 2018/19, predicted that wheat production will



Source: Mercantile, based on USDA Members

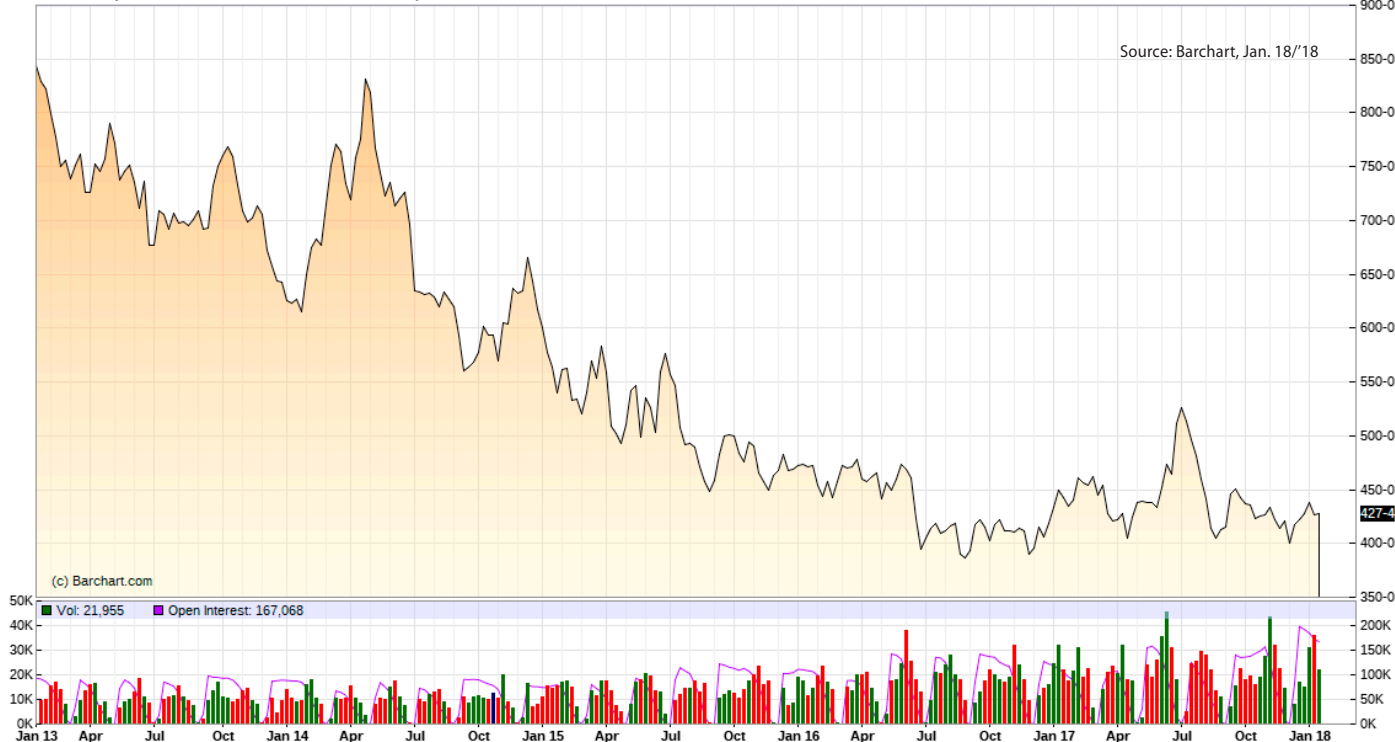
drop by 35 million mt to 742 million mt. This would represent the first decline in output since 2012/13. The IGC forecast that a weaker world wheat harvest this year could allow erosion of record global inventories, again for the first time since 2012/13.

Second – demand numbers: Wheat values are currently at their lowest level since 2010, so wheat is quite cheap in the markets, especially in local currencies of the buyers. This is bound to generate additional demand; it always does. Once we confirm sustained increases in demand, this will change demand projections and help lower ending stocks.

The IGC in their forecast expects that global trade “could set a record, underpinned by stronger shipments to Africa and to Asia”. While competition to Africa will remain strong by Russia and the EU, Canada should be reasonably well positioned to export more volume into Asia.

Third – quality: A lot of the world's carry-out this year will be in low quality stocks, and this should give additional openings in the market for both Canadian old crop and new crop wheat.

Kansas City Hard Red Wheat Futures Prices - US\$ per bushel



Having said this, international marketing of wheat for the current crop year is well progressed, and the window for sales will start narrowing in about 4 months. Remember, new crop wheat from Europe will come into the markets a lot sooner than Canadian wheat from the Prairies. There should, however, be a little time for basis improvement as canola shipments slow and exporters may have to turn more heavily towards wheat to generate volume through their facilities.

Note that improvements in new crop prices will take some time, because increased carryovers in Russia, the EU, Canada, and others

will mean that the period July through December '18 will be well supplied indeed. We therefore think that selling old crop wheat stocks and holding new crop wheat will be the best strategy for maintaining cash flow.

Note we do not expect to see a major increase in wheat prices until January 2019, unless significant winter kill is confirmed.

When selling old crop wheat, it pays to shop around as there is a big range in country bids. Some are quite good, particularly in Alberta.

## Sask Wheat commits \$2.7 million to collaborative wheat research

The Saskatchewan Wheat Development Commission (Sask Wheat) committed \$2,684,204 million to support wheat research projects funded under the Saskatchewan Agriculture Development Fund (ADF) in 2017. Saskatchewan's Minister of Agriculture, the Hon. Lyle Stewart, announced the funding of all crops-related ADF projects at CropSphere 2018 on Tuesday, January 9.

The producer funding Sask Wheat committed through the ADF process means Saskatchewan's wheat producers will play a significant role in finding solutions to issues such as fusarium head blight, other



diseases and environmental stressors, issues that are impacting producers across the province. These projects will allow Sask Wheat to continue to achieve our mandate of maximizing returns on producer check-off investments and building long-term, sustainable growth for the industry.

The total project investment towards the ADF projects co-funded by Sask Wheat, which includes leveraged funding and funds invested by the project proponents, is \$11,081,552. Sask Wheat has committed nearly \$6.1 million to projects through the ADF process since 2014. This research falls into the areas of variety development, production and post-production.

Targeted research is the best way to empower wheat producers in Saskatchewan to continue growing the quality wheat that the world demands. We are very pleased to partner with the government, and collaborate with other ADF co-funders, in order to strengthen the future of Canadian agriculture.

For a look at currently funded research, visit [www.saskwheatcommission.com](http://www.saskwheatcommission.com).

## SR&ED tax credits for 2017

The Scientific Research and Experimental Development (SR&ED) Program is a federal government program that encourages research and development by providing tax-based incentives.

By using levy contributions to finance research and development work that benefits Saskatchewan wheat producers, Sask Wheat is able to participate in this program and distribute these tax-based incentives to producers.

The program gives registered wheat producers access to investment tax credits (by means of cash refunds and/or reduction to taxes payable) for their levy contributions that are spent on qualifying research.

At the time of printing we had not yet received final confirmation from CRA of the percentage of levy contributions that producers may claim as a qualifying SR&ED expenditure on the 2017 federal tax

return. Please check the Sask Wheat website under the Research tab for this information or contact the Sask Wheat office.

Investment tax credits may be claimed by filing form T2038 (IND) for farm individuals or T2SCH31 for farm corporations.

In addition, farm corporations may also claim 25.68% of their levy contributions as a qualifying expenditure towards the Saskatchewan Research and Development Tax Credit program. This credit may be claimed by filing form T2SCH403.

Producers that have requested a refund of their levy are not eligible for either tax credit.

Please see [saskwheatcommission.com](http://saskwheatcommission.com) for links to the tax forms and more information.

## Midge Tolerant Wheat Stewardship Assurance Site



The Midge Tolerant Wheat Stewardship Team has launched a new online system to improve the Stewardship Agreement process for growers and retailers that will help to ensure continued protection of the midge tolerance gene.

The Midge Tolerant Wheat Stewardship Assurance Site (MTWSAS) is a secure, web-based tool for use by seed distributors, seed retailers and seed growers that makes the process of documenting the movement of Certified Midge Tolerant Wheat seed more efficient. It allows users to create electronically signed Stewardship Agreements and to post sales transactions.

All Midge Tolerant Wheat is sold to farmers under an Agreement in order to ensure proper stewardship of the technology, which limits the use of farm-saved seed to one generation past Certified seed. With MTWSAS, the stewardship principles do not change, but the process becomes a lot easier.

For more information on Midge Tolerant wheat please visit [www.midgetolerantwheat.ca](http://www.midgetolerantwheat.ca)

## Sask Wheat scholarships awarded to U of S students

Each year, Sask Wheat presents awards to four undergraduate students from the University of Saskatchewan's College of Agriculture and Bioresources. The 2018 awards, valued at \$2,500 each, were presented to four students at the annual Bean Feed event held November 9, 2018 at TCU Place in Saskatoon. Sask Wheat Director Ken Rosaasen and Research Program Manager Blair Goldade were in attendance at this event.

The recipients of these scholarships were selected on academic merit as well as an essay based on wheat research. The four recipients for 2018 were:

- William Kramer, 4th year, Agronomy major
- David MacTaggart, 2nd year, Crop Science major
- Jenna Olson, 3rd year, Resource Science major
- Michelle Ross, 4th year, Agronomy major

Sask Wheat also provides \$100,000 annually in post-graduate scholarships to University of Saskatchewan students. The purpose of this award is to attract and retain graduate students who plan to conduct research with social or scientific relevance to a sustainable

and profitable western Canadian wheat sector. In 2017, one new award was made and three previous awards were renewed. Recipients are:

- **NEW AWARD:**

**Anique Josuttes (MSc)** – Evaluate the efficiency and accuracy of high throughput phenotyping in the detection of head metrics in wheat breeding trials. Supervisors: Drs. Steve Shirtliffe and Curtis Pozniak

- **RENEWED AWARDS:**

**Jenny Vera-Ardilla (MSc)** – Timing of fungicide application and inheritance of resistance to stripe rust in spring wheat. Supervisor: Dr. Randy Kutcher

**Gurcharn Brar (PhD)** – Integrating host resistance, bio-molecular imaging and fungicide tools for management of Fusarium Head Blight in durum and spring wheat. Supervisors: Drs. Pierre Hucl and Randy Kutcher.

**Xue Lin (PhD)** – Genomic analysis and mapping of the wheat genome. Supervisor: Dr. Curtis Pozniak.



## Grade School 2017

Sask Wheat, along with SaskCanola and SaskBarley, hosted two “Grade School” events in late November 2017 in Rosetown and North Battleford. Presentations by the Canadian Grain Commission (CGC) and the Canadian International Grains Institute (Cigi) gave producers an opportunity to learn about degrading factors and their impact on end-use quality and functionality. Producers were also given hands-on demonstrations on how their grain is graded. Understanding the grading process and factors that determine grades, as well as the tools and resources available to producers is very important to assist producers in making decisions while marketing their grain.

Watch for information on the 2018 Grade Schools in upcoming newsletters and on our website.



## Customers eager to hear about crop quality during 2017 new crop missions

Excellent attendance by top wheat buyers at the 2017 Canadian new crop missions held in 18 countries in November and December underscored the importance of these annual face-to-face discussions in maintaining and building strong customer relationships.

In a year marked by the production of high-quality wheat by western Canadian farmers, international customers in Asia, Europe, Africa, Middle East, North America and South America received data and information essential to their wheat purchasing decisions. Using an approach that is uniquely Canadian, new crop seminar attendees heard from the entire value chain including farmers and exporters as well as representatives, scientists and technical specialists from Cereals Canada, Canadian International Grains Institute and Canadian Grain Commission.

Customers representing the majority of the market share in the countries visited attended the seminars. Attendees asked presenters a range of questions from technical issues such as milling and baking qualities to farming practises including how growers decide what they grow and how the quality of grain is monitored in storage.

Said one customer in Santiago, Chile, “This seminar is the best way to engage buyers. It gives us the opportunity to discuss how best to add value to our products.”

Additional meetings with individual customers were scheduled in several markets along with tours of mills, bakeries and pasta facilities, providing an opportunity to gather further feedback from customers.



*Yvonne Supeene, Head of Baking Technology at Cigi presents data on the baking quality of the 2017 crop during the seminar in Dubai.*

“In both good and difficult crop years, new crop missions provide an opportunity to be face-to-face with customers from key markets post-harvest,” said Cigi CEO JoAnne Buth. “It’s a two-way exchange of information that helps build trust with customers, ensures we continue to meet and exceed their expectations, and facilitates a closer working relationship with them on behalf of the Canadian industry.”

For seminar presentations and other related information go to [www.CanadianWheat.ca](http://www.CanadianWheat.ca)

# Register NOW for *Think Wheat 2018!*

In mid-March, Sask Wheat again will be hosting two meetings aimed at providing producers in the province with the most up-to-date and relevant information about producing and marketing their crops.

## TENTATIVE PROGRAM

(see [saskwheatcommission.com](http://saskwheatcommission.com) for the full meeting agendas)

Marlene Boersch (*Marketing*)  
Richard Cuthbert (*Wheat Breeding*)  
Dean Diaz (*Cigi*)  
Jim Downey (*New Seed Varieties*)  
Mitchell Japp (*FHB and Pests*)  
Chris Holzapfel/Jessica Pratchler  
(*Agronomy & Local Issues*)

**March 13, 2018**

**Weyburn Travelodge**

Registration: 8:30am

Program: 9:00am to 3:30pm

**March 14, 2018**

**Tisdale RECplex**

Registration: 8:30am

Program: 9:00am to 3:30pm

## REGISTRATION

Producers are encouraged to register in advance on the Sask Wheat website, as space is limited. Advance registration is free. Registration at the door is \$20. Lunch and refreshments will be provided.

Register now at [saskwheatcommission.com](http://saskwheatcommission.com) or call 306-653-7932



# Think Wheat 2018

**Sask**  **Wheat**  
DEVELOPMENT COMMISSION

310 - 111 Research Drive, Saskatoon SK S7N 3R2  
Phone: (306) 653-7932 | Web: [saskwheatcommission.com](http://saskwheatcommission.com)

